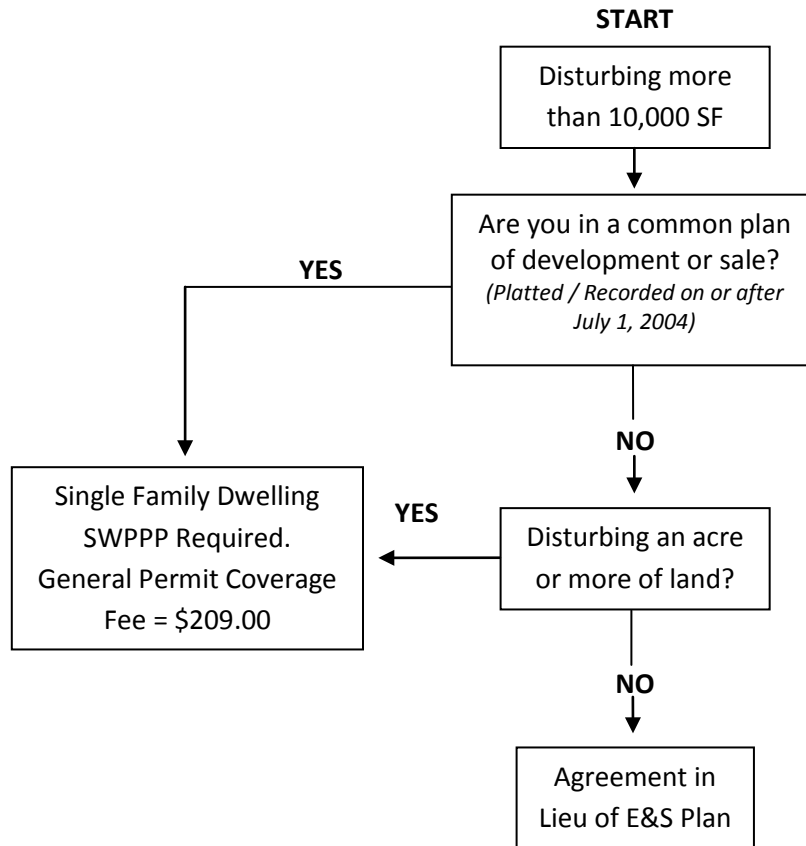




New Single Family Dwelling Flowchart



The Following Items are Required Prior to the Issuance of a Land Disturbance Permit:

Single Family SWPPP: Required for projects in a Common Plan of Development or Sale (Platted and Recorded on or after July 1, 2004) or when disturbing 1 acre or more of land. The SWPPP includes:

- A copy of the signed "Agreement in Lieu of an Erosion & Sediment Control Plan"
- A copy of the signed "Agreement in Lieu of a Stormwater Management Plan"
- An edited copy of the "Single Family Stormwater Pollution Prevention Plan"
- A copy of the "Single Family Detached Residential Structure Coverage Letter"
- A copy of the "2019 General Permit for Discharges of Stormwater from Construction Activities"
- A fee of \$209.00 payable to "Botetourt County Treasurer"

The above documents can be found on our website at:

<http://www.botetourtva.gov/government/stormwater.php>

The last three bulleted documents can also be found on the DEQ website at:

<http://www.deq.virginia.gov/Programs/Water/StormwaterManagement/VSMPPPermits/ConstructionGeneralPermit.aspx>